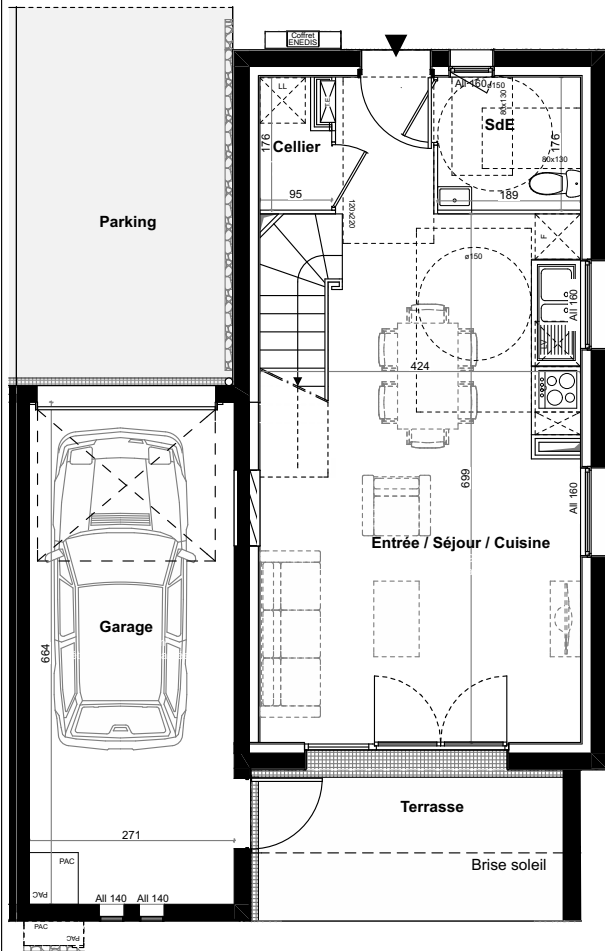
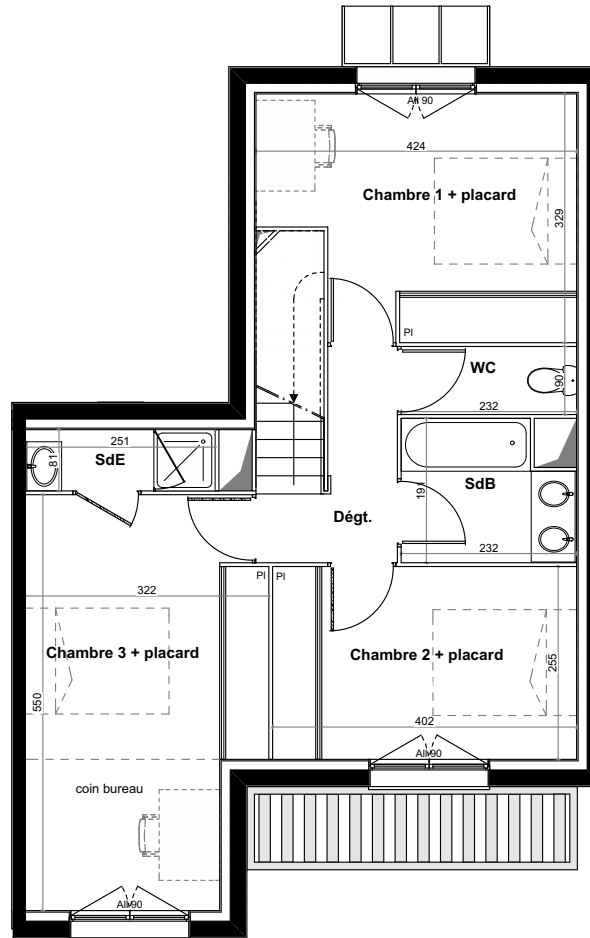


RÉSIDENCE LES GALETS

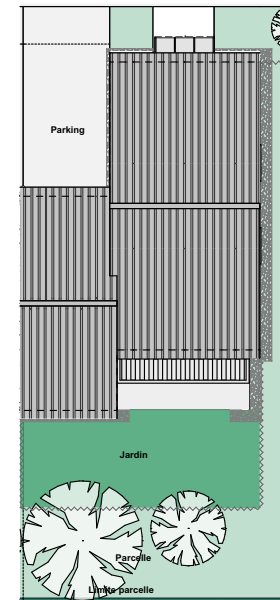
11, route de la Plage
LESPINASSE (31150)



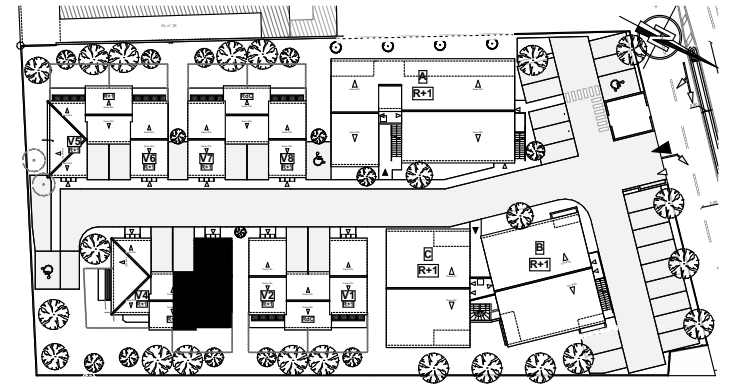
REZ DE CHAUSSÉE



ETAGE



JARDIN



VILLA T4 Duplex

V3

Surfaces Habitables (m²)

Cellier	1,5 m ²
Entrée / Séjour / Cuisine	29,3m ²
SdE	3,3 m ²
Chambre 1 + placard	12,5m ²
Chambre 2 + placard	10,3m ²
Chambre 3 + placard	16,2m ²
Dégt.	3,5 m ²
SdB	4,0 m ²
SdE	2,0 m ²
WC	2,1 m ²

Les surfaces des pièces comprennent les surfaces des placards

Total habitable 84,7 m²

Terrasse	8,3 m ²
Parcelle	env. 43,0 m ²
Jardin	env. 24,0 m ²
Parking	13,6 m ²
Garage	18,2 m ²